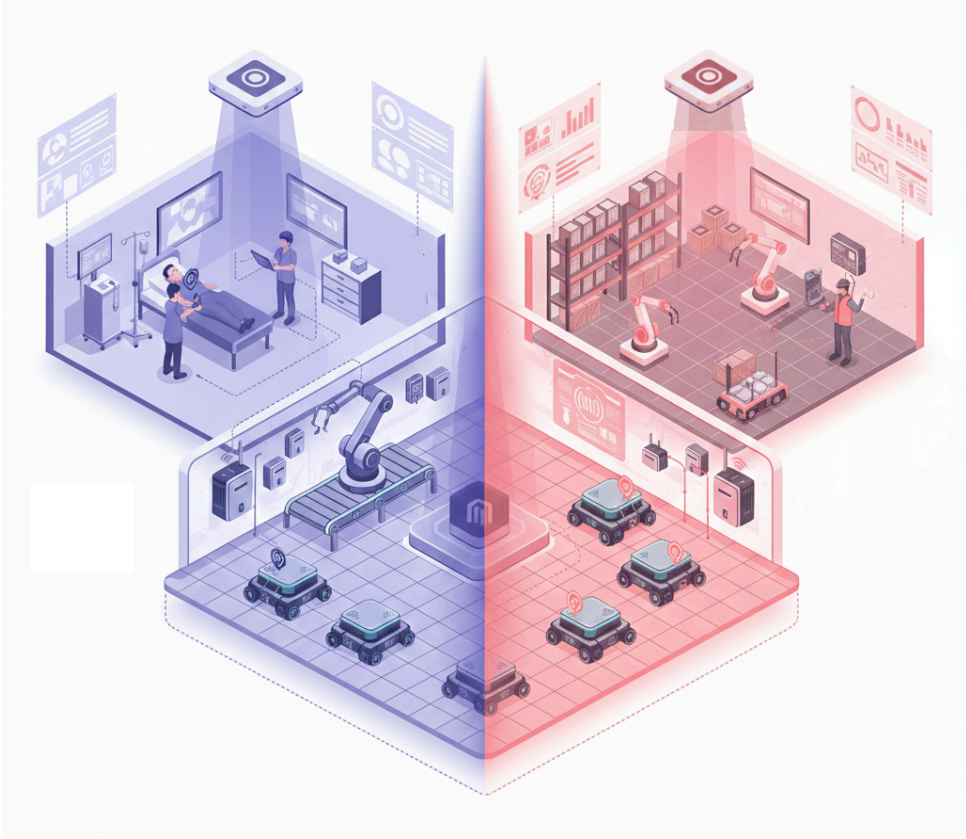


# sentrax NEWSLETTER

ISSUE • January 2026



## The Future of Hybrid RTLS

### What is BLE Hybrid RTLS?

Real-world tracking requirements are rarely uniform. Some zones demand **sub-meter precision**, while others only need **room-level visibility** or **simple proximity detection**.

Traditionally, achieving different accuracy levels meant deploying separate systems - doubling your costs and operational headaches. **Sentrax's Hybrid RTLS** eliminates that complexity by blending different technologies into a single, seamless infrastructure.

#### • Inside this edition •

• **The Hybrid Advantage:** Why "One Size Fits All" doesn't work for tracking.

• **One Tag, Total Floor Coverage:** How we bridge the gap between RSSI and AoA.

• **Product Spotlight:** Meet the ZENIX LEN Series & ZENIX LON Series AoA Locators.

## One Tag. Multi-Level Accuracy.

Sentrax's Secret Sauce is simple: **The accuracy adapts to the infrastructure, not the tag.** With a single tag and a unified platform, you can scale your precision based on the zone:

- **High-Precision Zones:** Sub-meter accuracy for critical assets.
- **Area & Zone Tracking:** Medium-level accuracy for general workflow monitoring.
- **Presence Detection:** Low-overhead proximity for automated interactions.

**The Bottom Line:** You get the flexibility to grow and the power to optimize your ROI by only deploying high-precision hardware where it truly matters.

## Hardware spotlight

### BLE RSSI-Based Locators & Gateways

Sentrax's RSSI gateways are the workhorses of the Sentrax ecosystem. Designed with a **dual-chip architecture** and edge-intelligence, they ensure stable, redundant, and powerful tracking. Provides room-level to proximity-level positioning.

#### ZENIX LEN-1



The standard for proximity & medium accuracy. Features **PoE & Wi-Fi**.

#### ZENIX LEN-2



Integrated **climatic and presence sensors** for environmental insights.

#### ZENIX LEF-3



Outdoor **LTE & GPS**. 4 antennae for seamless connectivity & performance.

### BLE Angle of Arrival Locator & Gateway:

For mission-critical operations, our **Angle of Arrival (AoA)** scanners deliver sub-meter accuracy. Leveraging advanced **edge-processing** algorithms and a high-performance hardware design, positioning engine, they provide real-time, low-latency location data. Powered by advanced microprocessors and supporting **multiple connectivity options**, the scanners ensure reliable and scalable deployment across demanding environments.



## One Platform. Endless Use Cases.

Whether you are managing a **warehouse**, a **hospital**, or an **industrial site**, Sentrax Hybrid RTLS gives you the freedom to mix precision and scalability without compromise.

For more details on  
Sentrax's Hybrid RTLS

[Click here](#)

Want to know more about  
Sentrax?

[Click Here](#)

FOR PARTNERSHIP AND  
OTHER DETAILS

[sales@sentrax.com](mailto:sales@sentrax.com)

To know more about Sentrax's products, visit:  
[www.sentrax.com](http://www.sentrax.com)