

# sentrax NEWSLETTER

ISSUE • August 2025

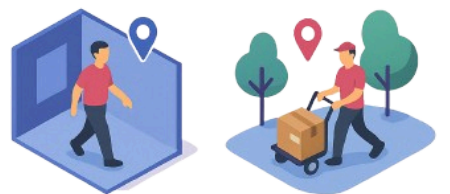


## What's New At Sentrax

RTLS Without Limits: Edge, On-Prem & Cloud Integration



Beyond Walls: Indoor & Outdoor RTLS Innovations



Tag Partner Spotlight: Minew



## Partner Spotlight - Minew

This month, we're excited to highlight our partnership with **Minew**.

Through this collaboration, Minew have introduced **SBeacon-compatible BLE AoA tags**, giving customers a wider range of tag options to fit our partner's specific needs.

Paired with Sentrax's state-of-the-art **RTLS gateways and middleware**, this means our partners can now select the right form-factor tag for each use case — whether it's for people, assets, or specialized equipment — and deploy it seamlessly within the Sentrax ecosystem.

The result is greater flexibility, precision, and efficiency in building RTLS solutions that truly fit your operations.

## Edge, On-Premise & Cloud - The Complete RTLS Stack

At Sentrax, our gateways don't just forward raw signals — they process the data on-device through edge computing, filtering and refining it before sending results to the server. This ensures faster insights, reduced bandwidth usage, and more efficient deployments. Customers can then choose between on-premise Solix Engine deployments, which provide full control and compliance by keeping data inside their infrastructure, or cloud-hosted services, which deliver scalability, remote access, and easy integration with partner platforms. Together, this ecosystem gives organizations the speed of edge, the control of on-prem, and the flexibility of cloud — all in one RTLS solution.



## Indoor vs. Outdoor RTLS: Trends & Innovations

The RTLS ecosystem is evolving to balance indoor precision with outdoor scalability. Indoors, Sentrax delivers sub-meter accuracy through BLE AoA, RSSI, and hybrid RTLS hardware for hospitals, warehouses, and smart buildings. Outdoors, our dedicated devices with LTE connectivity ensure reliable coverage across wide areas such as mines, utilities, and logistics yards. With deployment options spanning edge, on-premise, and cloud, Sentrax provides a complete solution that works seamlessly across every environment — indoors, outdoors, and everywhere in between.

## Ready to Experience Cutting-Edge RTLS?

Kickstart your journey with our **BLE AoA and RSSI Evaluation Kit**, complete with complimentary access to the **Solix RTLS & IoT Management Platform** and full **API support**. This ensures seamless integration of Sentrax RTLS into any higher-level management system — making it smarter, faster, and easier to deploy.



Book a Demo Today for Free!

Want to know more on Sentrax RTLS?

For pricing, partnership, and other details

[Click here](#)

[Click Here](#)

[sales@sentrax.com](mailto:sales@sentrax.com)

To know more about Sentrax's products, visit:  
[www.sentrax.com](http://www.sentrax.com)